

Wireless Remote Management



Concept Document

Document Tag - e3-MCOM-WRM-001
Release Date - 12/Dec/2009

E Cube India Solutions Limited,
Bil Road, Bil – 391410. Dist. Vadodara.
Phone: +91 265 3051100 / 2680099 Fax: +91 265 3051111
E – Mail: info@e3india.com; Web: www.e3india.com



SMARTVEND - *The Concept*



Vending is a form of Automatic Merchandising offering **CONVENIENCE** to the consumers, in their buying operations. Besides this, Vending creates a neat and hygienic environment congenial for buying, provides a consistent product condition, reliable operation and round-the-clock buying facility, making odd hours buying possible. Vending as a concept provides value addition to the products and services offered, besides accruing returns and larger sales volume. On the whole, this concept promises to bring about a revolution in modern day retailing.

THE TECHNOLOGY

E Cube India is manufacturing and supplying vending machines and various MDB devices, designed as per International Communication Protocol. E Cube India has designed the various vending machines and MDB devices using state of the art technologies based on the market requirements.

E Cube India offers wide range of vending machines and various add on devices for third party Vending Machines which can operate using one of the following technology:

- Smart Cards / Loyalty Cards
- Mobile Phones
- Various Payment Devices like Note-Coin Acceptors.
- Wireless Remote Management (WRM)



Wireless Remote Management (WRM) is the state of art 2nd generation solution. The solution includes WRM Gateway and WRM Module.

The system provides numerous accountability and management reports to track your sales along with the notification of the error reports.

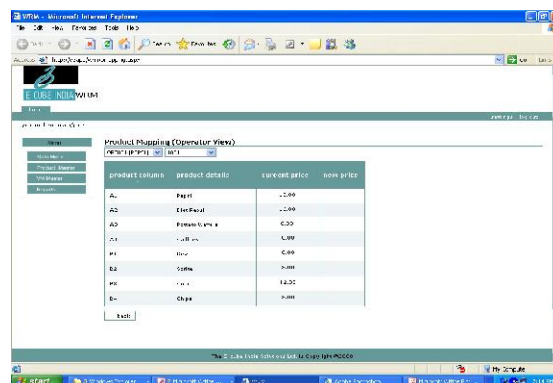
It also helps your business for sales predictions and replenishment scheduling to reduce sold outs and machine operator visits.

The WRM Module is installed into the vending machine to allow it to communicate the above information back to WRM Gateway.

WRM Gateway will reside at E Cube India M Commerce backbone.

Operator will be provided with User ID and Password to Access the web based WRM gateway and browse the information about the machines placed in the field.

Wireless Remote Management





System consists of;

- a. WRM Module (Hardware) - GSM/CDMA - GPRS (Data Channel). This module is installed* in Vending machine or any compatible equipment.

Each Module will require GPRS/Data enabled SIM.

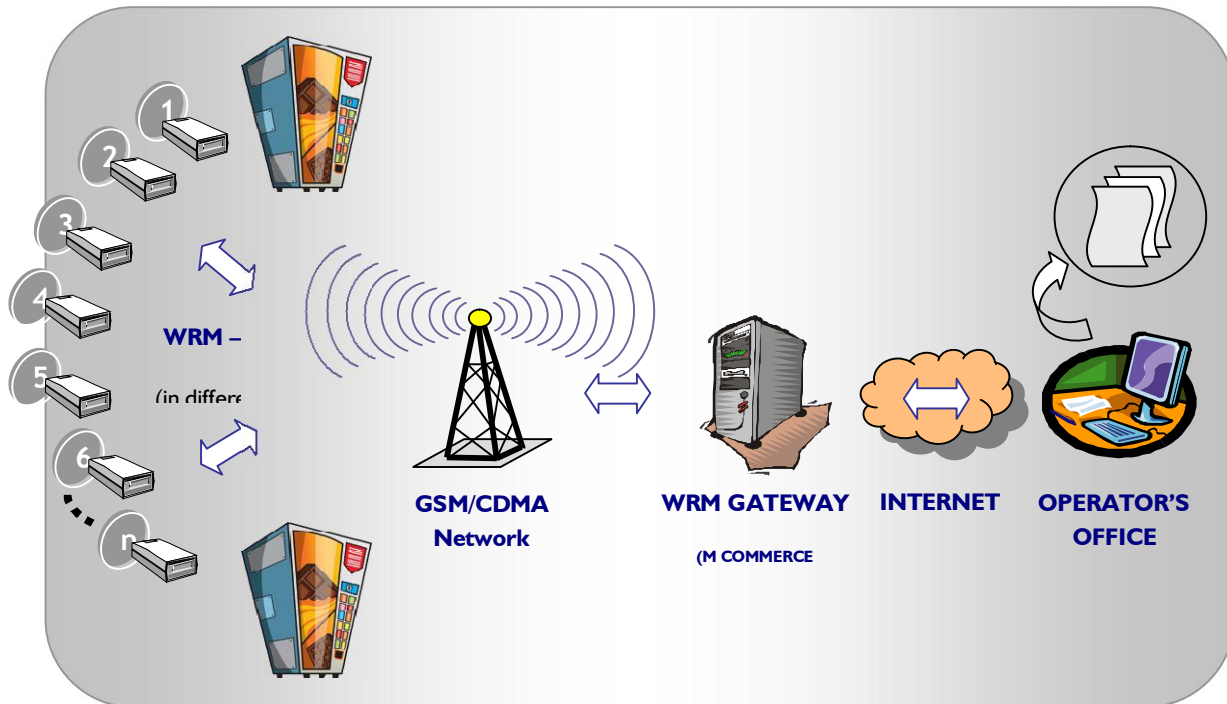
* check installation guidelines supplied with the product

- b. WRM Gateway - WRM Gateway resides at E Cube India M Commerce Backbone. Operator will be provided with User ID** and Password** to access web based WRM Gateway.

** will be sent to you through email after WRM Module is dispatched. This will remain same for all additional Modules installed in future.



System Overview





Key Features

- WRM Module(s) installed in each vending machine / equipment transmits data from the machine / equipment on request from WRM Gateway. To fetch data from WRM Module(s), visit www.e3india.net. Enter your User name and Password to begin. Select the device and request the data from it.
- Alternatively, WRM Gateway can fetch data from WRM Module(s) and send to pre-defined email ID in excel format on regular interval.
- Standard MIS reports and Error Reports are available at WRM Gateway as per the data collected from WRM Modules(s), to view and download.
- Error reports can be sent as SMS notification to pre-defined mobile number (This feature is optional and available on monthly chargeable basis).
- Configure Machine Parameters by sending data from WRM Gateway to WRM Module(s). Machine price can be configured from WRM Gateway. With E Cube India make machines, more parameters like Point of Sale Message, Temperature Range, Vend Options, Date/Time, MIS reset, Currency denomination unable / disable, Product Sensor unable / Disable and Machine Help Desk Number can be configured. For other machines, feasibility of the controller board, to support such feature, will be checked.

Reports

Various reports are generated from WRM Gateway which is available for Operator:

1. Sales Reports (Machine wise):
 - a. Total Vends and Cash
 - b. Historical Total Vends and Cash
 - c. Selection wise
 - d. Tray wise
2. Time base Sales Reports
 - a. Day wise
 - b. Week wise
 - c. Month wise
3. Error Reports covers various events like:
 - a. Refund incomplete
 - b. Motor errors
 - c. Temperature Sensor Defective
 - d. Control Board Error
 - e. Keyboard Error
 - f. Coin / Note Jam
 - g. Coin / Note Reject and more
 - h. Product Sold out (subject to feature availability on machine along with product sensor)



Specifications

| | |
|--------------------------------------|---|
| Dimensions L X W X H (in mm): | Host Terminal : 199mm (L) x 90mm (W) x 64mm (H) ICD : 180mm (L) x 155mm (W) x 35mm (H) |
| Weight: | Host Terminal : 500 gms (Without Battery) 400 gms |
| Electrical: | Host Terminal : 12V, 3.2A ICD : 5V, 200mA Battery (POS) : 7.4V, 2400mAH Lithium Polymer Rechargeable battery |
| Human Interface: | Large and white Monochrome GLCD (128*64) with bright back lit 18 keys keyboard (Including Power on key) 4 function keys |
| Processing Power: | 32 bit ARM Micro-controller based |
| Memory: | 2MB SRAM (Lithium Battery backed) 8MB Flash memory |
| Host Interface: | International Standard – Multi Drop Bus, DEX |
| Communication: | Built –in GSM/CDMA Modem (Optional) |
| Security: | WRM Module requires registration to transfer data to/from WRM Gateway |
| Transaction: | Through GSM (GPRS) / CDMA (Data) |
| Color: | Black / Grey |
| General Features: | Electronic Controller Transaction Data Storage Digital MIS Display Low Maintenance |

Note - Specifications may change without notice