

WIRELESS REMOTE MANAGEMENT

Wireless Remote Management

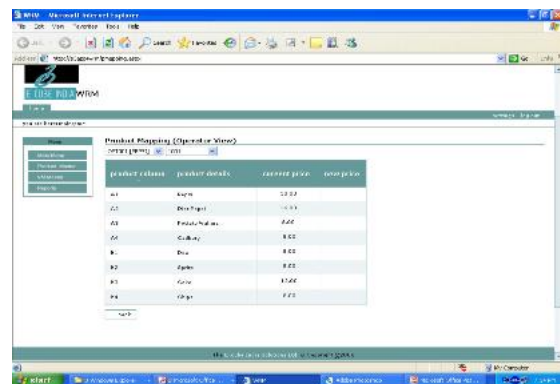
(WRM) is the state of art 2nd generation solution. The solution includes WRM Gateway and WRM Module.

The system provides numerous accountability and management reports to track your sales along with the notification of the error reports.

It also helps your business for sales predictions and replenishment scheduling to reduce sold outs and machine operator visits.

The WRM Module is installed into the vending machine to allow it to communicate the above information back to WRM Gateway.

WRM Gateway will reside at E Cube India M Commerce backbone.



E CUBE INDIA



WIRELESS REMOTE MANAGEMENT

Specifications

Dimensions L X W X H (in mm):	210 x 138 x 90
Weight:	1.8 Kgs (Without Battery)
Electrical:	Terminal: 100-240 Vac, 1.6 Amps, 50/60 Hz
Human Interface:	Large and white Monochrome GLCD (128*64) with bright back lit 18 keys keyboard (Including 1 Power on key) 4 function keys
Processing Power:	32 bit ARM Micro-controller based
Memory:	2MB SRAM (Lithium Battery backed) 8MB Flash memory
Host Interface:	International Standard – Multi Drop Bus, DEX
Communication:	Built –in GSM/CDMA Modem (Optional)
Security:	WRM Module requires registration to transfer data to/from WRM Gateway
Transaction:	Through GSM (GPRS) / CDMA (Data)
Color:	Black / Grey
General Features:	Electronic Controller Transaction Data Storage Digital MIS Display Low Maintenance

Note - Specifications may change without notice

E Cube India Solutions Ltd.
Padra-Jambusar Road,
Masar, Dist. Vadodara,
Gujarat, INDIA 391421
Phone: +91 02662 237808
Email: info@e3india.com
website: www.e3india.com

E CUBE INDIA

