

WIRELESS MULTI-APPLICATION TERMINAL (WMAT)

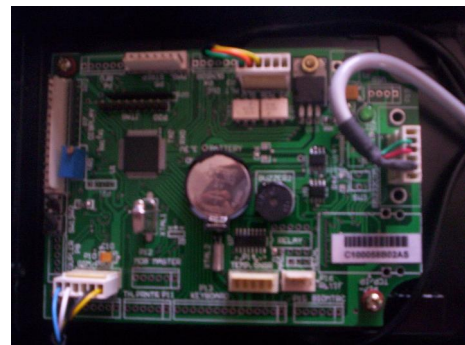
WIRELESS Multi-application Terminal (WMAT)

WMAT is wireless Multi Application Terminal. It includes Host Terminal (HT) and an Interfacing Control Device (ICD). It is designed to accumulate more than one application. Some of Applications supported by WMAT are WRM, MOVM, Mobile top-up, Smart Card transactions, Credit Card transaction etc.

Wireless Remote Monitoring (WRM) is Application which provides track for sales in vending machine. It also provides error notification if occur in vending machine. So Merchant can acquire sales or error reports remotely.

Mobile Operated Vending Machine (MOVM) is the application in which User is allowed to vend product by using Cell Phone Credit.

Note: Different brackets are supplied based on the application and type of machine.



WIRELESS MULTI-APPLICATION TERMINAL (WMAT)

Specifications

Dimensions of Host Terminal (in mm):	208 (L) X 90 (W) X 63 (H)
Dimensions of ICD PCB (in mm):	122 (L) X 88 (W) X 20 (H)
Electrical:	Terminal: 100-240 Vac, 1.6 Amps, 50/60 Hz
Human Interface:	Large and white Monochrome GLCD (128*64) with bright back lit 18 keys keyboard (Including 1 Power on key) 4 function keys
Processing Power:	32 bit ARM Micro-controller based
Memory:	2MB SRAM (Lithium Battery backed) 8MB Flash memory
Host Interface:	International Standard – Multi Drop Bus, DEX
Communication:	Built –in GSM/CDMA Modem (Optional)
Transaction:	Through GSM (GPRS) / CDMA (Data)
Color:	Black / Grey
General Features:	Electronic Controller Transaction Data Storage Digital MIS Display Low Maintenance

Note - Specifications may change without notice

